




Forest View Residential Houses



Inside every child is
a rainbow waiting
to shine.

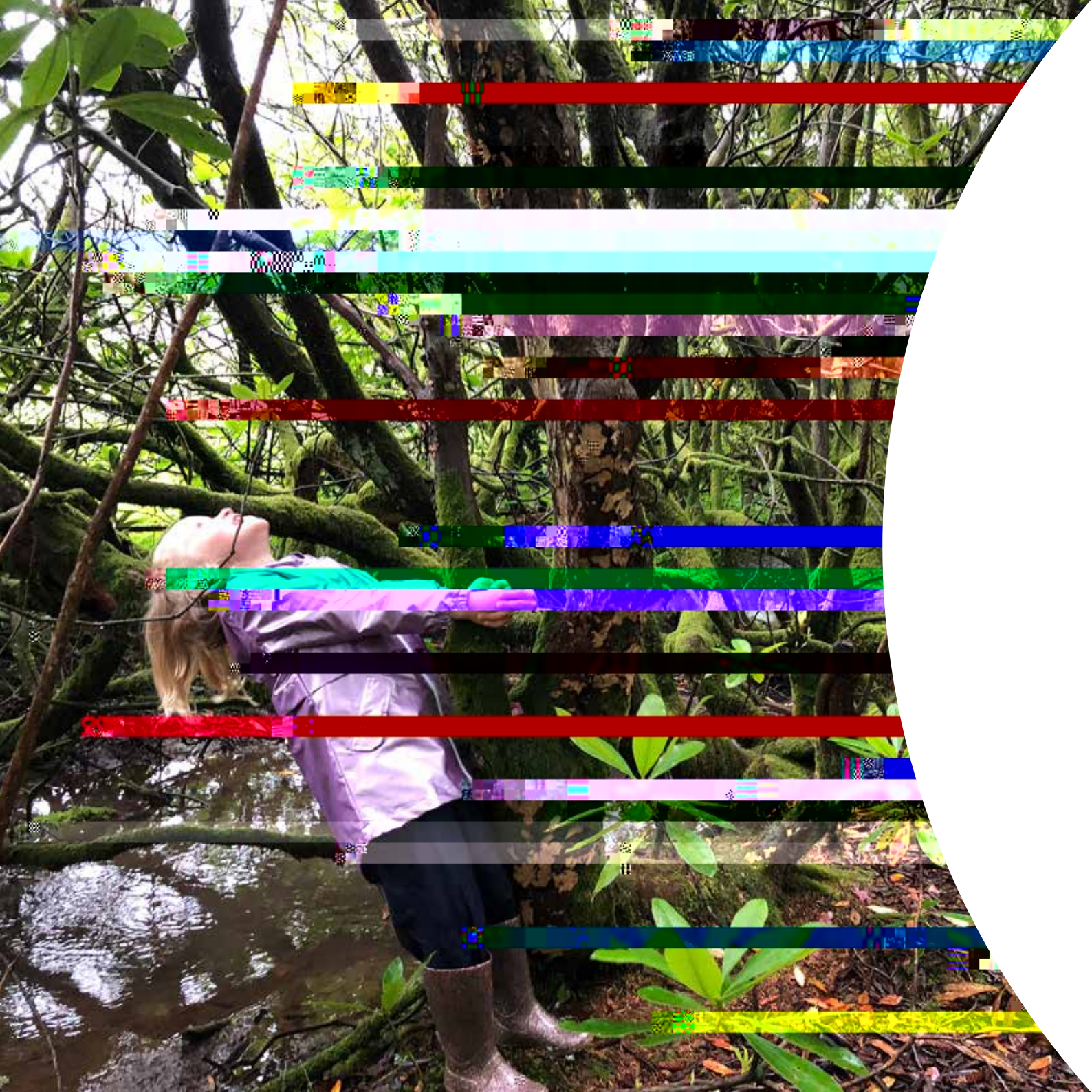
Frederick Douglass, Social Reformer

Welcome to Forest View Residential Houses

As part of child and youth care charity Kibble, Forest View Residential Houses provide nurturing accommodation for children aged between five and twelve. Our two individual houses, Ness and Tay, provide beautiful four and five-bedroom accommodation for children with experience of trauma. Set in Lochwinnoch, a semi-rural village in the west of Scotland, Forest View is surrounded by trees, rugged landscapes and stunning wildlife.

Everything about Forest View from the peaceful forest location, nature-inspired interiors, therapeutic primary school, play areas and sensory gardens has been developed around therapeutic, trauma-informed principles. Children are safe here, they are surrounded by warm, friendly adults who are a constant source of love and support. Our ethos is to have lots of fun, to laugh, dance and play. Forest View is the product of years of research into best practice in residential childcare. It's a place where happy children (aged 5-12) can live, where children can explore nature's playground, and where children can learn, play and grow. Forest View is a safe, nurturing and supportive environment where children can thrive. We provide a safe, nurturing and supportive environment where children can thrive. We provide a safe, nurturing and supportive environment where children can thrive.

and jump away (and provides a -inspiring education) for us to do it. The Tw 0 -1.5 Td {Childre, (whoneped helpingh (and to engage) 1 wiuth lsean hin.,) 0.9 Thep schoow provides e safi, and supportive geodudation where



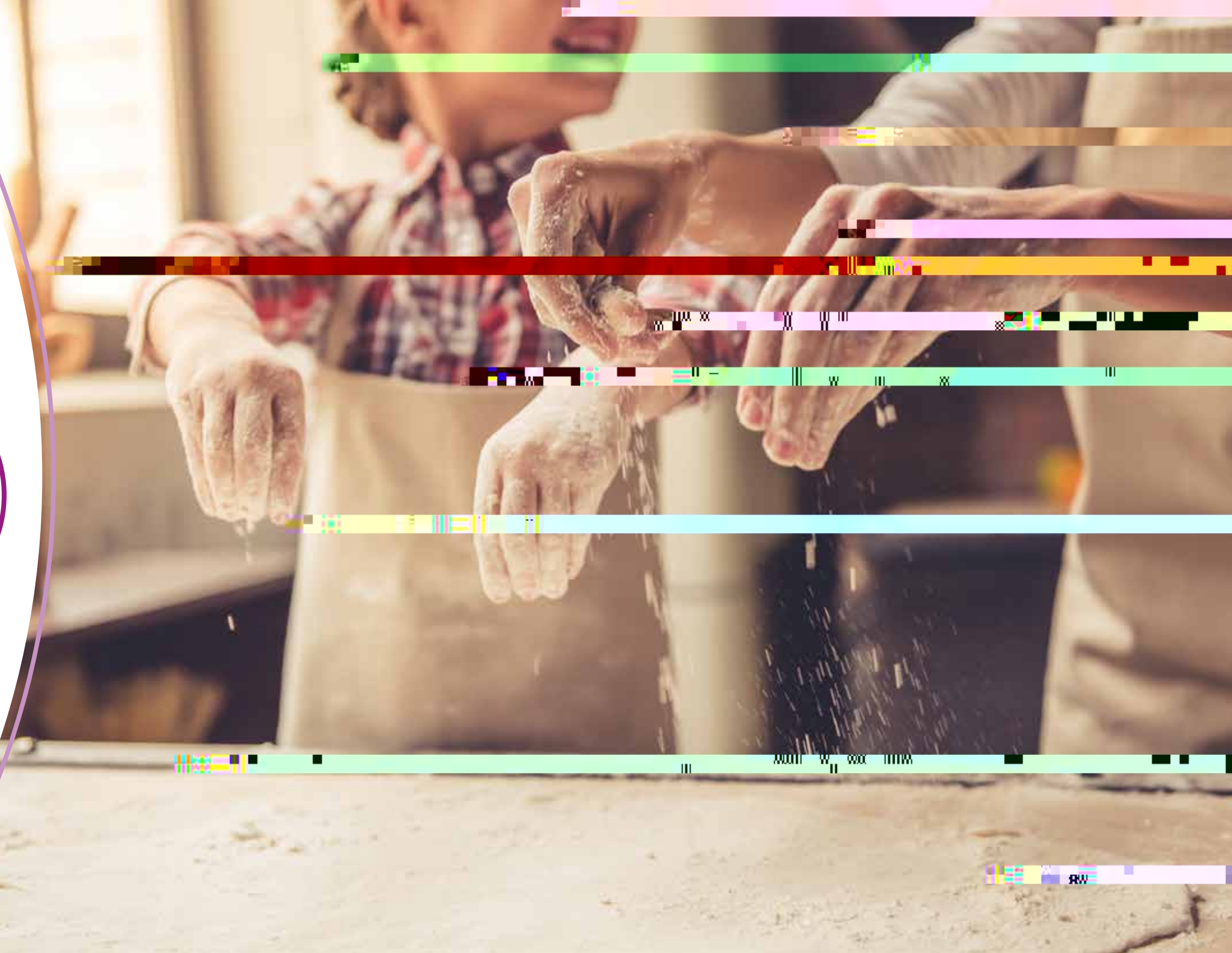
Nurturing Children's Houses

To help children feel settled, and to support them through earlier trauma, we provide a therapeutic, trauma-informed model of care to ensure the children's physical and emotional wellbeing. In our houses – Ness and Tay, we have created

All rooms from the living room with its comforting throws, toy boxes and photos that line the walls, to the kitchen and dining room, are warm, welcoming and modern. Children are encouraged to bring their own style and character to their bedrooms in order to create a safe, comforting space to relax. The house also has a sensory room which helps children to regulate at times when they may need. This has an array of tactile, sensory objects including weighted blankets to help children feel safe, vibrating comfort cushions and even an interactive wall made of colourful Lego.

The house's interior is organic in style, drawing in nature to help children feel grounded. The glass

of space to explore the abundant wildlife and enjoy hours of play. But of course, these are children's houses and across all the rooms there are splashes of colour, children's paintings on display, toys, reading books, arts, crafts, and games.





Sowing New Seeds in Residential Childcare

Kibble is at the forefront of residential childcare, and Forest View is the latest provision

informed principles from the forest environment to the therapeutic supports, positive relationships, ethos and culture. By following this therapeutic model, children feel safe, loved and supported.

Across Kibble, we strive to help children and young people maintain connections with their families. Families are encouraged to visit regularly and play an active and supportive role in their child's development. We provide ongoing support to families in the form of Systemic Family Therapy, where everyone around the child or young person works together under the support of a family therapist. These sessions explore emotions and behaviours in order to develop a shared understanding and to strengthen family bonds.

Using the principles of social pedagogy, children are encouraged to explore and be curious. The acres of forest provide the perfect backdrop to explore, and to complement this natural playground we also have a large sustainable timber play park. To promote risky play and help children develop problem solving skills while connecting to the natural environment, the play apparatus is dynamic and challenging, with inspiration derived from the philosophy of Friedrich Froebel.

Hens in the grounds provide fresh eggs for breakfasts, and as well as the wildlife that roam the grounds, we welcome much loved four-legged pets including miniature ponies,

great deal of joy.

Helping Children Thrive – Therapeutic Supports

All children at Forest View are closely supported by Kibble's Specialist Intervention Services (SIS). The in-house team works closely with children and their families to provide trauma-informed psychological consultation, assessment and therapeutic interventions. With a diversity of knowledge and expertise, the SIS team conducts ongoing research and explores best practice to ensure the highest level of care for children, young people and families. Their work has gained them several awards, including the prestigious Butler Trust Award, and they have also published widely in peer-reviewed journals. As part of their commitment to delivering therapeutic, trauma-informed practice, they recently completed an international study fellowship on trauma-informed care, with the learning from this informing our practice at Forest View.

Our therapeutic practitioners are integral to the team at Forest View: they help implement our therapeutic model and provide support to children and families individually. We believe in providing the right therapies at the right time and our approaches range from art and play therapies to cognitive behavioural therapy (CBT) and systemic family therapy. The full range of therapeutic approaches can be found on our [website](#).





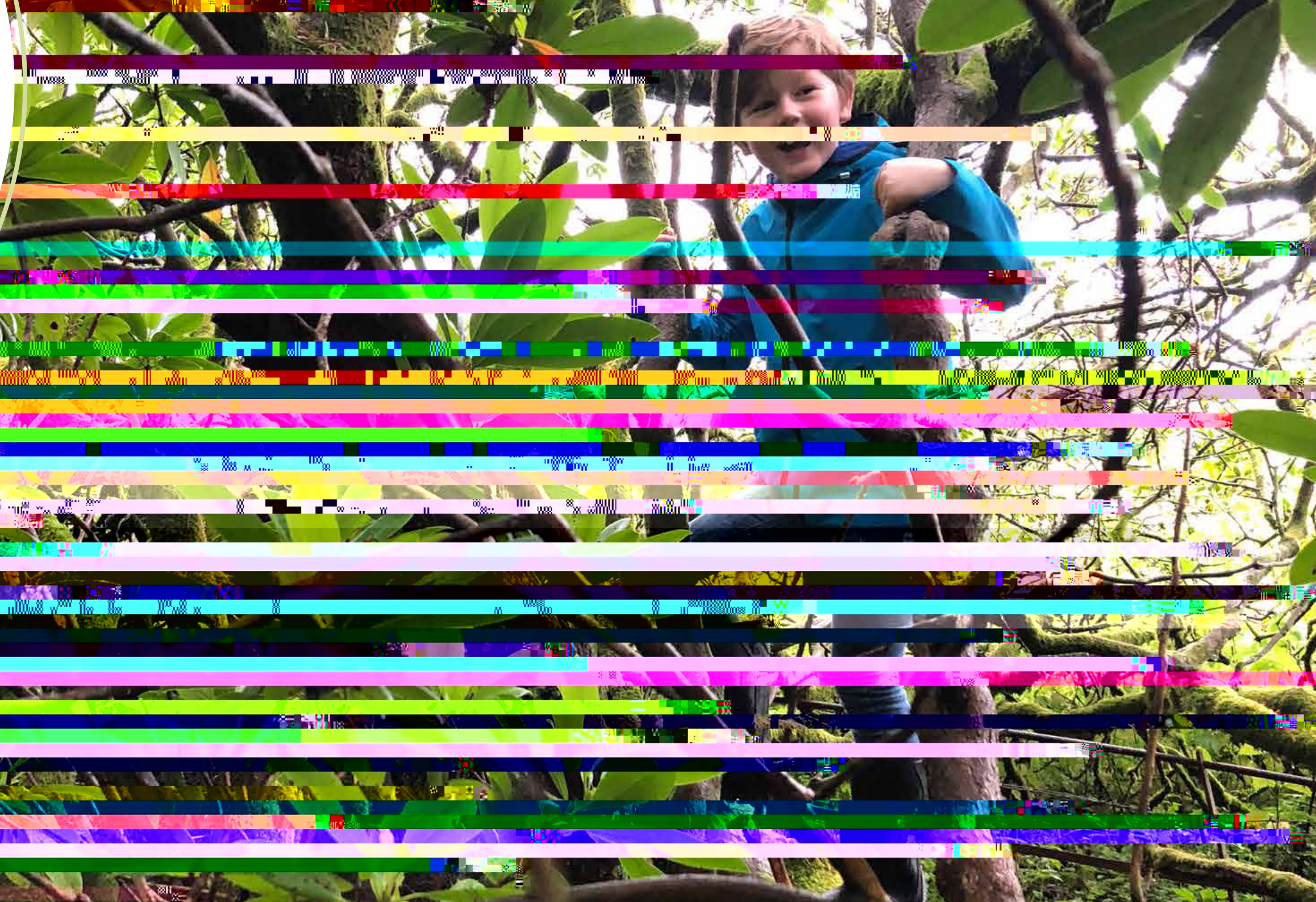
Safety, Connectedness and Coping

At Forest View, and across our residential service we create houses that enable children to feel safe, connected and able to

Entwined in the Community

The children are encouraged to enjoy all that the community has new friends with other children. On our doorstep is the scenic Lochwinnoch Nature Reserve where the children regularly visit to explore and learn about the local birds and wildlife.

We also actively promote intergenerational activities such as our HenPower project which brings the children together with elderly residents in local care homes to enjoy arts activities and hen-keeping. This successful project, funded by The National Lottery Awards for All, helps to promote health and wellbeing, while combating feelings of loneliness and isolation.





Kibble, Goudie St, Paisley PA3 2LG T: 0141 889 0044
W: www.kibble.org | [@KibbleCharity](https://twitter.com/KibbleCharity)

Kibble Education and Care Centre Scottish Charity No. SC026917 Registered in Scotland No. 158220